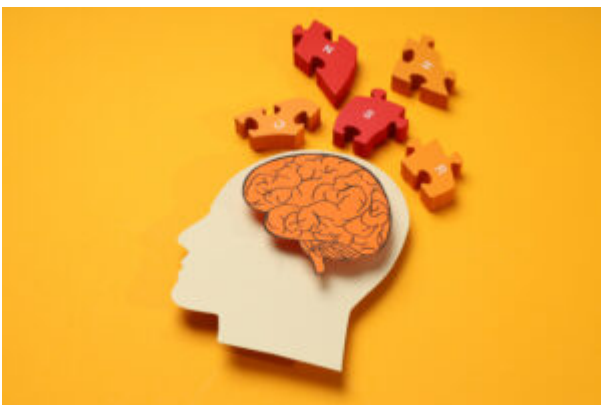


Understanding the WISC-V Fluid Reasoning Index: A method to understanding your child's problem-solving difficulties.



Does your child seem to struggle with new puzzles, difficult concepts, or noticing patterns? Do they seem to struggle with complex problem-solving or require help with logical reasoning? A good method to understanding your child's problem-solving struggles would be a comprehensive cognitive evaluation, specifically a neuropsychological evaluation at South County Child and Family Consultants. This evaluation would provide valuable insights into your child's cognitive strengths and weaknesses through the Fluid Reasoning Index, an important component in a neuropsychological evaluation.

A key assessment used is the Wechsler Intelligence Scale for Children–5th Edition (WISC-V). This assessment measures various cognitive skills to identify your child's learning style. The Fluid Reasoning Index (FRI), a WISC-V component, assesses their ability to solve new problems and understand abstract relationships. It measures skills like logical reasoning, visual pattern analysis, and quantitative

reasoning, showing how your child adapts to unfamiliar situations. Fluid Reasoning Index subtests, Matrix Reasoning and Figure Weights, reveal the child's capacity to detect and apply underlying rules for nonverbal problem-solving. For more on Fluid Reasoning Index subtest administration, edpsyched.com is a valuable resource.

What is the WISC-V Fluid Reasoning Index?

Fluid Reasoning Index subtests, Matrix Reasoning and Figure Weights, evaluate a child's ability to:

- Measure novel problem-solving and abstract thinking.
- Assess reasoning skills independent of prior knowledge.
- Evaluate visual pattern recognition and relationship analysis.
- Reflect ability to apply logic and deduce rules.
- Indicate proficiency in quantitative reasoning.
- Highlight cognitive flexibility and adaptation.
- Show ability to understand complex problem-solving.
- Assess pattern completion, classification, and logical reasoning.

What High Fluid Reasoning Index Scores Mean

Children with high Fluid Reasoning Index scores are often perceived as quick-witted and insightful, demonstrating strong problem-solving abilities. They typically:

- Exhibit strong ability to solve new, "on the spot" problems.
- Demonstrate excellent abstract thinking and conceptual understanding.
- Are proficient in identifying logical rules and patterns.
- Effectively integrate information and detect relationships.
- Demonstrate strong quantitative reasoning skills.
- Exhibit high cognitive flexibility and adaptability.

- Quickly extract new knowledge.
- Utilize strong inductive and deductive reasoning.

What High Fluid Reasoning Index Scores Mean

Lower Fluid Reasoning Index scores can indicate various challenges, including:

- Difficulty connecting visual information to abstract concepts.
- Problems understanding relationships among patterns.
- Challenges in applying conceptual or quantitative concepts.
- Lower general reasoning abilities.
- Difficulties with logical and deductive reasoning.
- Struggles assessing visual information relationships.
- Potential difficulty detecting underlying rules.
- Possible difficulty with quantitative relationships.

Understanding a low Fluid Reasoning Index score allows for targeted educational support focused on strengthening abstract reasoning, problem-solving skills, and pattern recognition skills.

Neuropsychological Evaluations: Answers and Support

For a neuropsychological evaluation, including the WISC-V and Fluid Reasoning Index, South County Child and Family Consultants in Wakefield, Rhode Island, provides expert assessments. At SCCFC we specialize in ADHD evaluations and understanding learning differences. Contact South County Child and Family Consultants at 401-789-1553 or evals@sccfc.net for more information.